

# Windows 8 USB driver guide

## 1. Install Windows Mobile Device Center

Windows Mobile Device Center requires the .NET Framework 3.5 which is not part of Windows 8. Follow the below step to enable .NET Framework 3.5.

### 1.1 Enabling the .NET Framework 3.5 in Control Panel

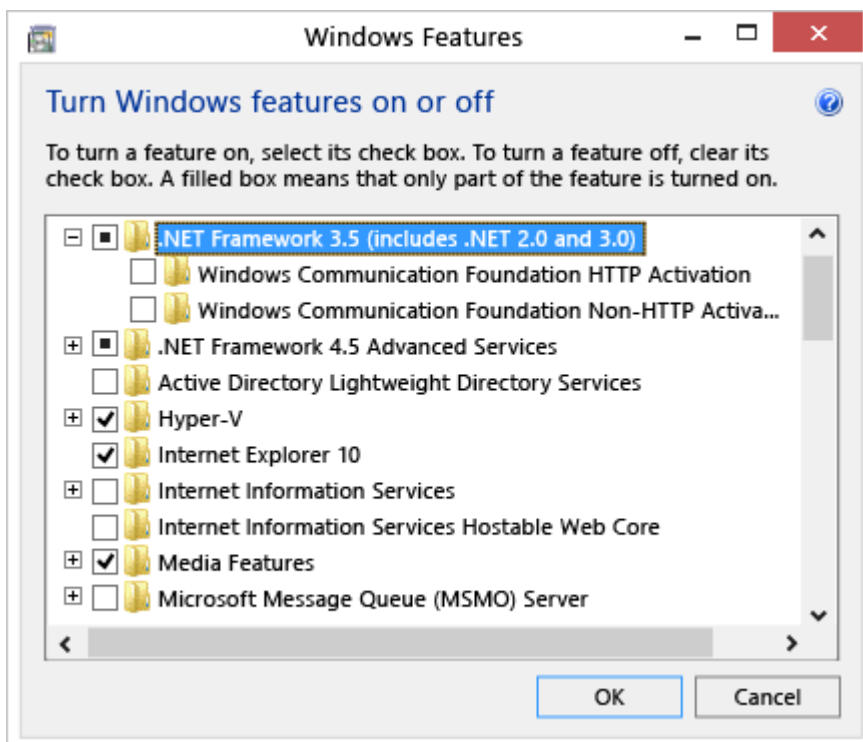
-> Open Control Panel and choose **Programs and Features**

-> Choose **Turn Windows features on or off**

-> Select the **.NET Framework 3.5 (includes .NET 2.0 and 3.0)** check box

-> Click **OK** to update. This option requires an Internet connection.

Turn Windows features on or off in Control Panel



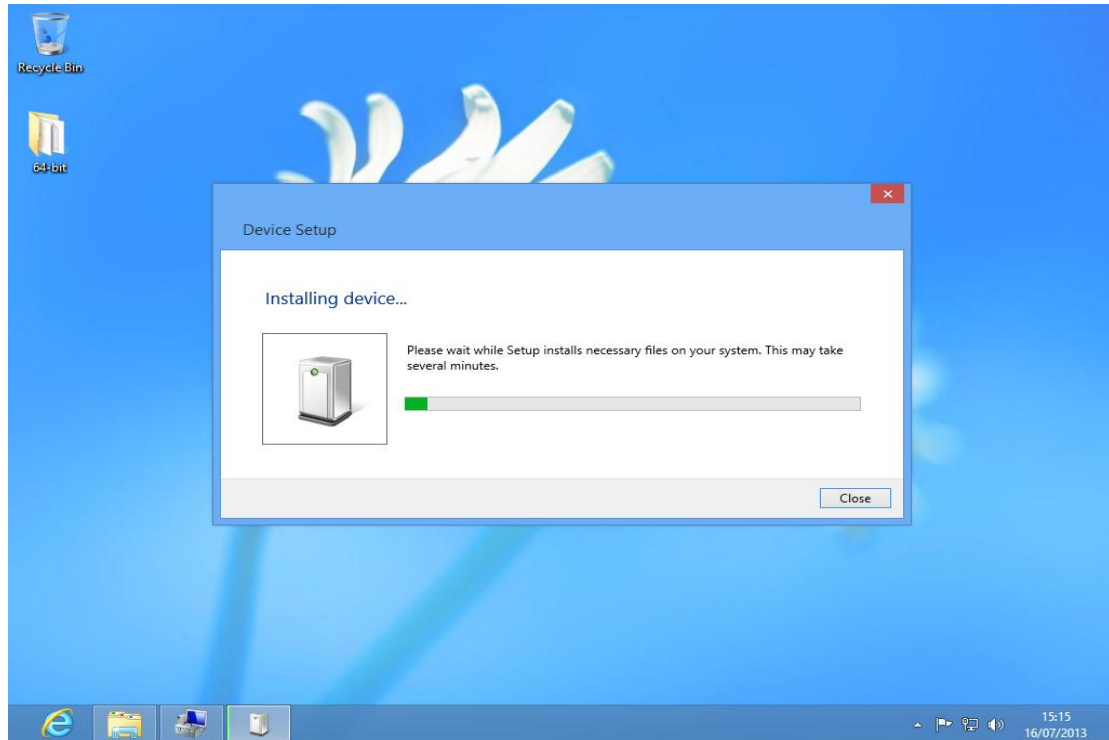
See [Installing the .NET Framework 3.5 on Windows 8](#) from Microsoft for more detailed information.

### 1.2 Microsoft Mobile Device Center

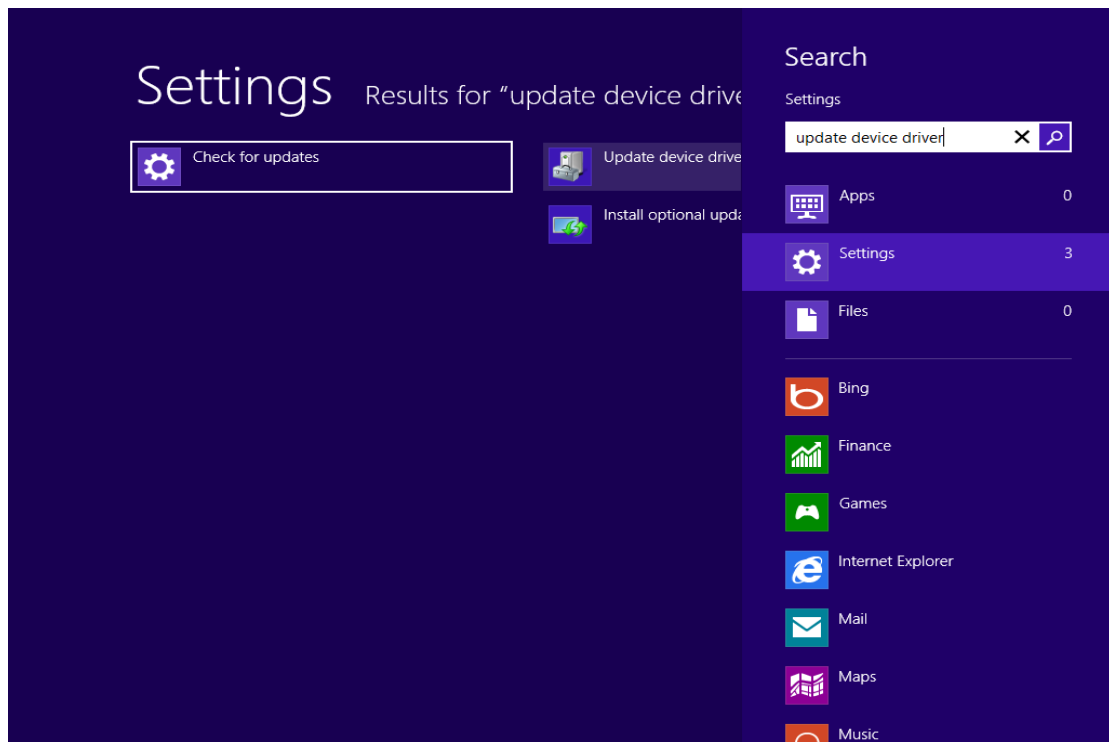
Download and install Microsoft Mobile Device Center from [Microsoft's Website](#) if you run Windows Vista, Windows 7 or Windows 8 on your computer.

## 2. Install terminal USB driver

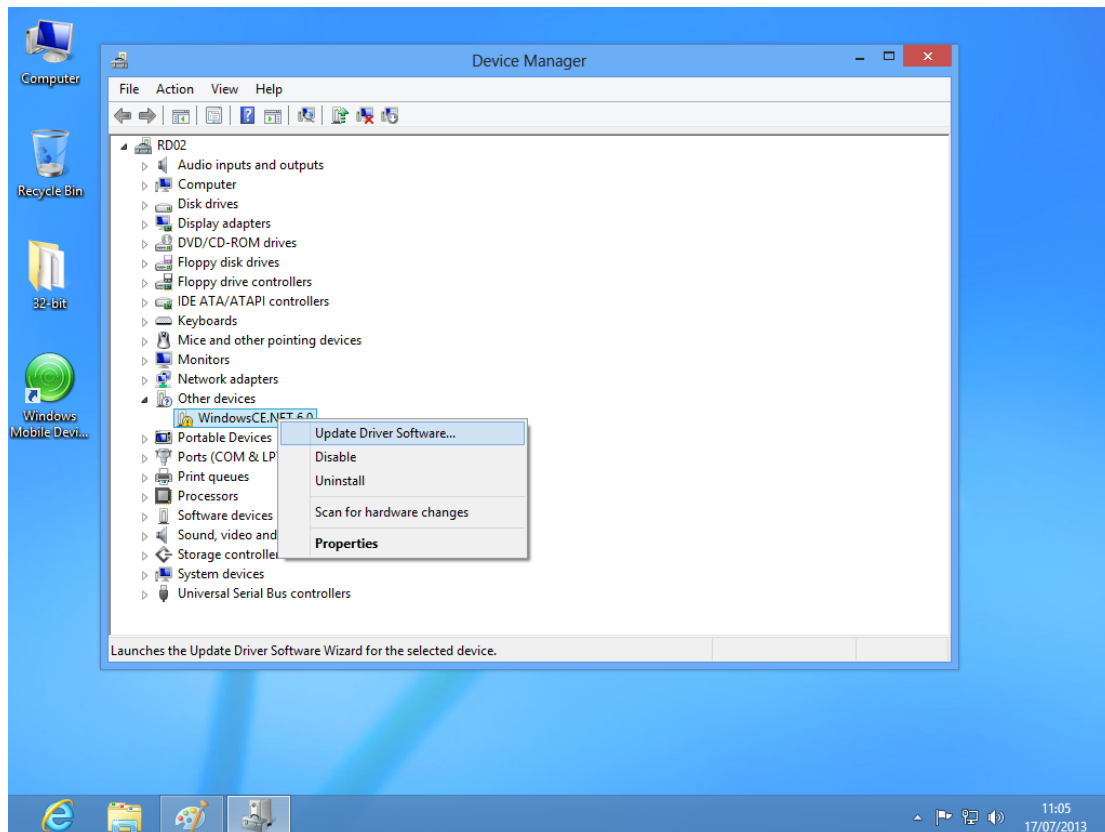
- > Connect PC and Terminal with USB cable
- > The Device Setup window appears. Press **Close** or wait for several minutes to close windows.



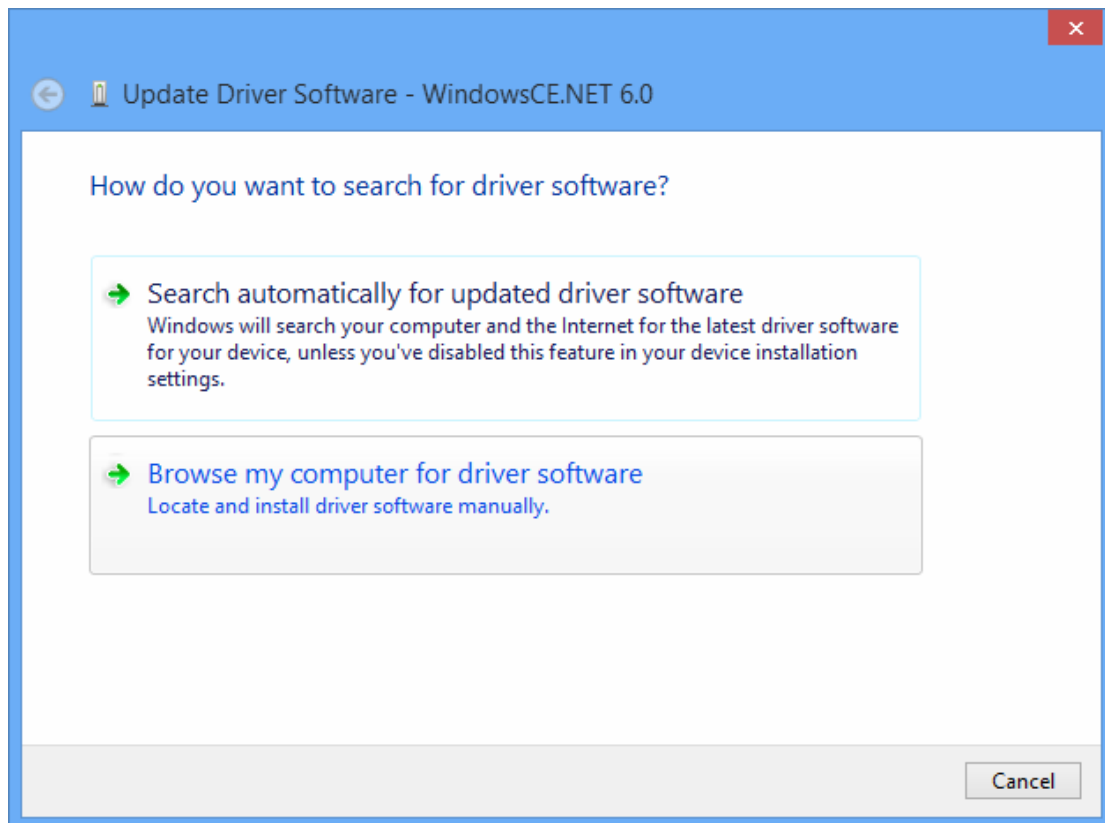
- > Open the Charms Bar and clicking **Search**, entering Update device driver in search box, clicking **Settings**, and then clicking **Update device driver**



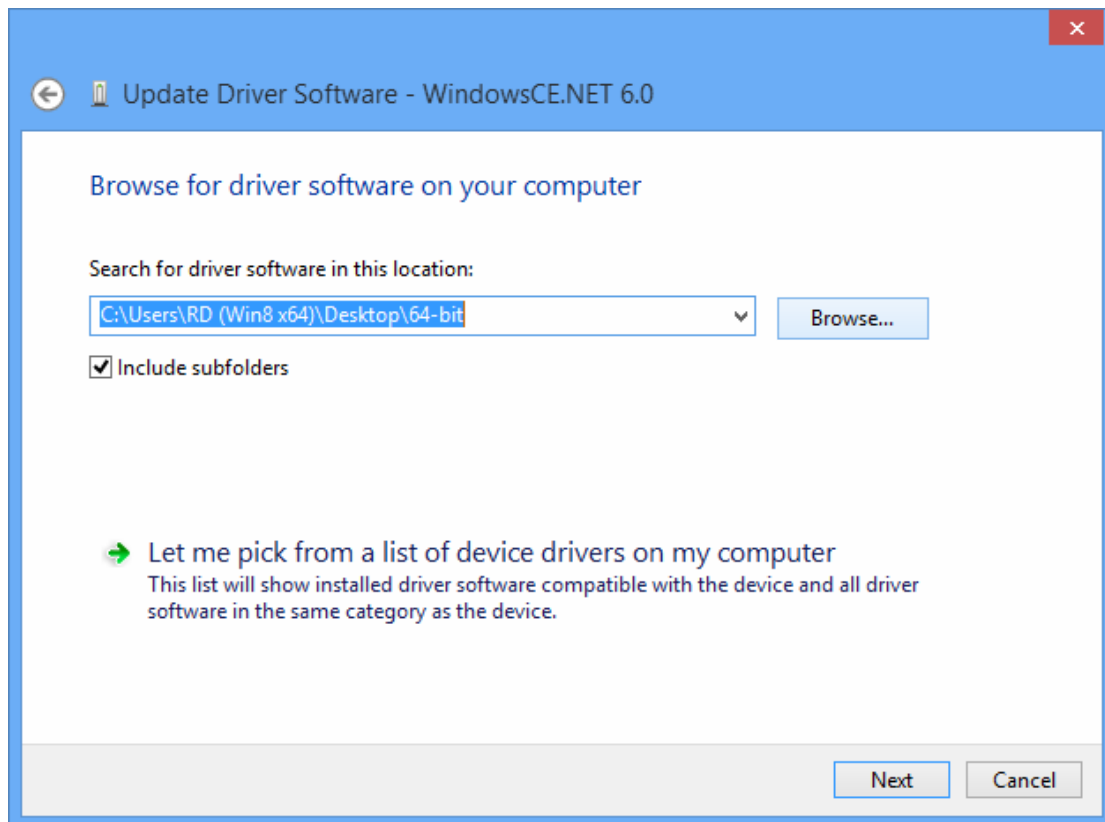
-> Right-click on Terminal device and select **Update Driver Software**



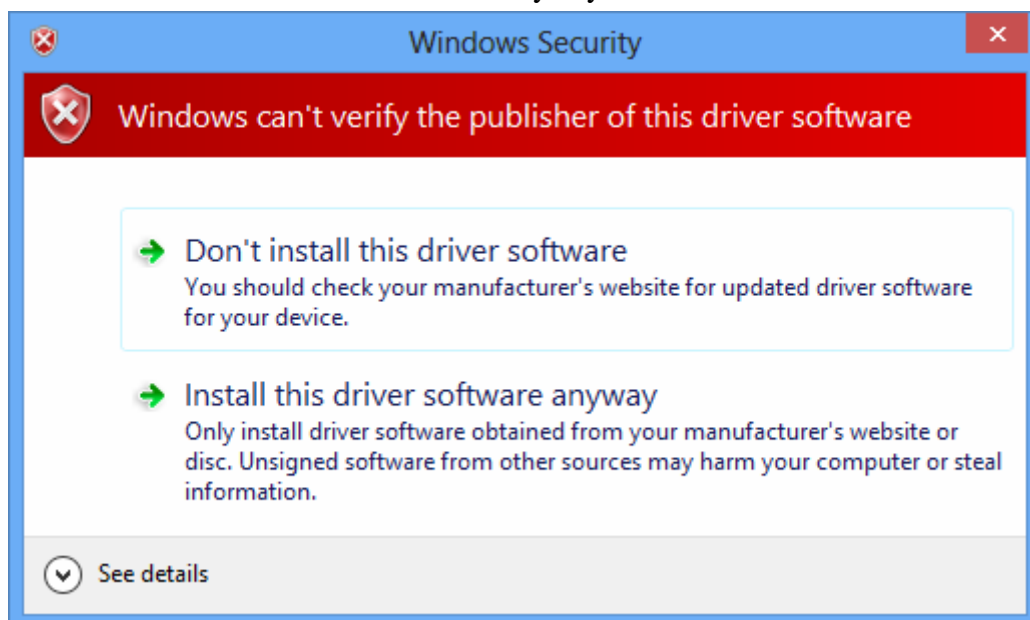
-> Select **Browse my computer for driver software**



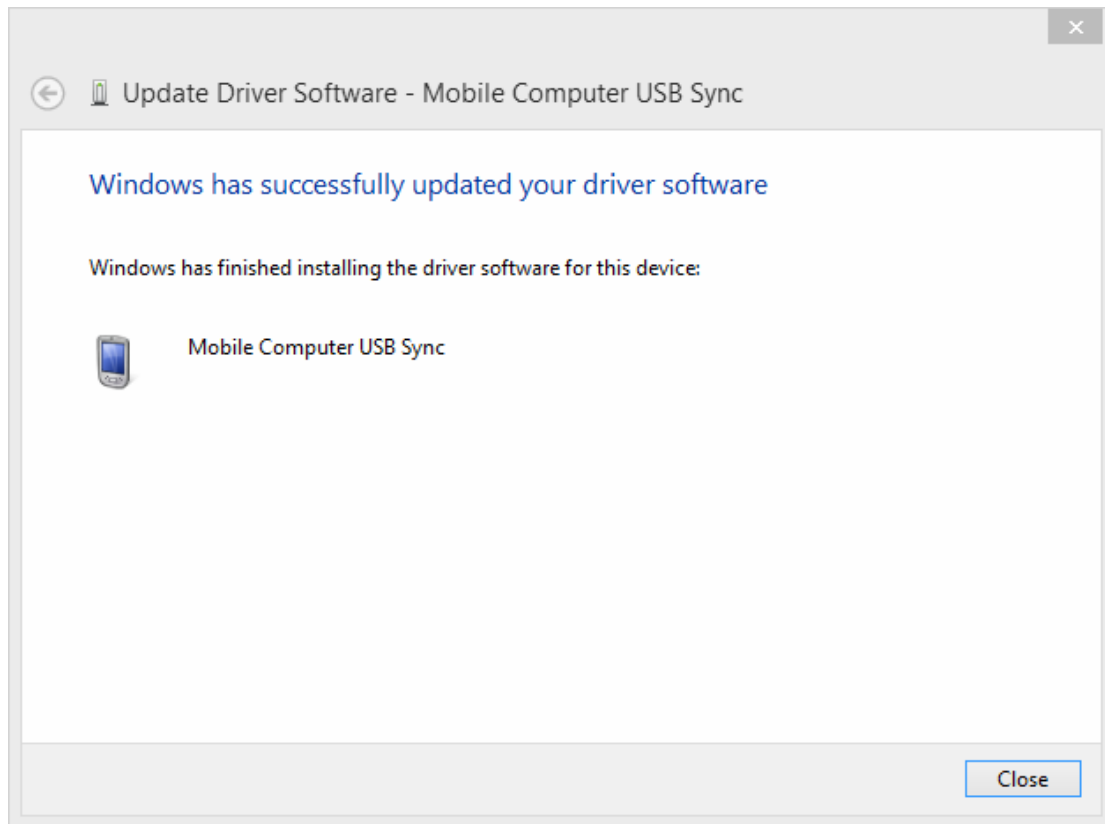
-> Browse driver folder and press **Next**



-> Select Install this driver software anyway

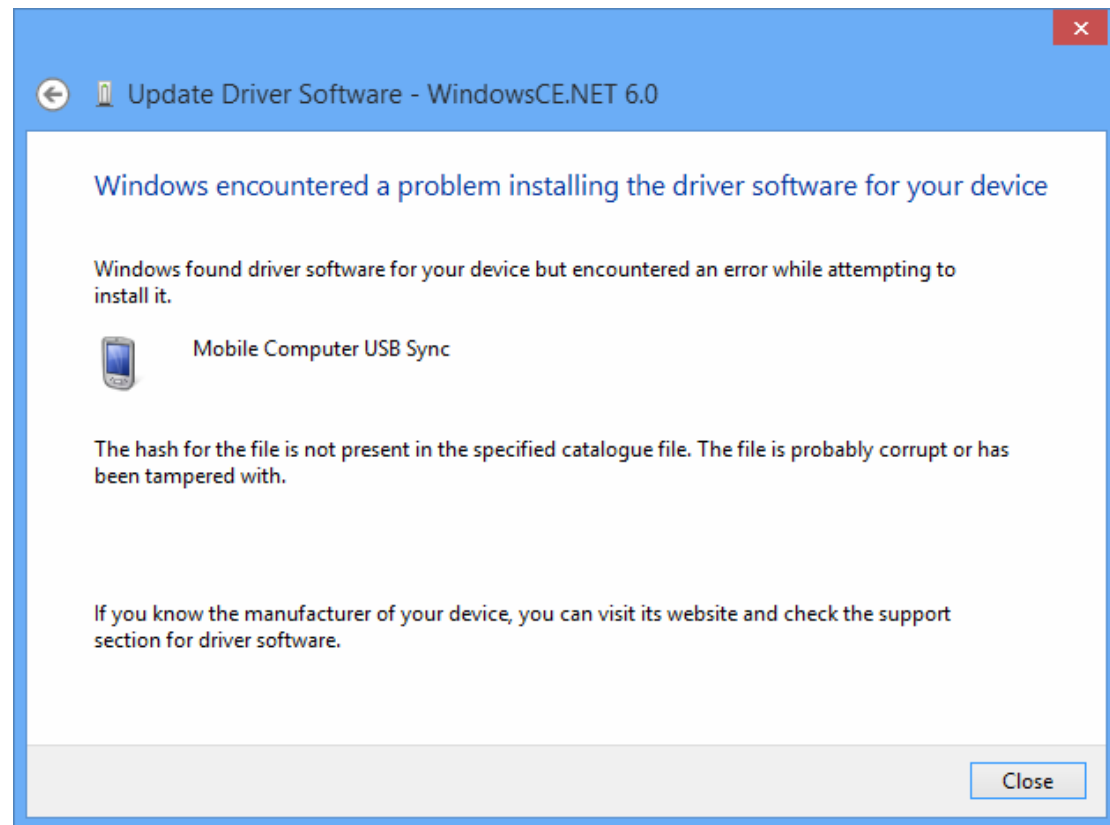


-> Windows has successfully updated your driver software



## Troubleshooting

- The hash for the file is not present in the specified catalogue file. The file is probably corrupt or has been tampered with.



To solve this program, you need to disable Device Driver Signing feature.

- > Open the Charms Bar and click **Settings**
  - > Click **Change PC Settings**
  - > Click **General**
  - > Scroll down to the bottom. Under the Advanced startup, click **Restart now**
  - > Click **Troubleshoot**
  - > Click **Advanced options**
  - > Click **Startup Setting**
  - > Click **Restart**
  - > Press **number key 7** to disable driver signature enforcement
  - > Once completed, you can install USB driver.
- Windows Mobile Device Center application does not self-launch automatically after you connect the terminal to PC  
You will need to launch the application manually.